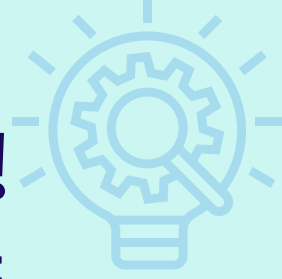


Research Opportunity!

The Myelin Disorders Biorepository Project (MDBP)



Cure LBSL is happy to share an important research opportunity from the Leukodystrophy Center at the Children's Hospital of Philadelphia (CHOP). The MDBP is a large, multi-center study of people with leukodystrophies (including LBSL). Over 2000 people worldwide have joined the study, including some with LBSL.

What is included?

Natural history study
Medical record, genetic testing, and MRI imaging collection
Optional blood sample collection (USA only)

Why is this study important?

Knowledge gained may help researchers and doctors understand more about LBSL, including potential treatment options in the future.

Who can participate?

Anyone with LBSL worldwide. Language interpretation / translation is available.

How do I learn more?

Visit
<https://www.chop.edu/research/myelin-disorders-biorepository-project>
or
<https://clinicaltrials.gov/study/NCT03047369>

Where can I join?

Visit
<https://forms.chop.edu/form-6559042/leuko-referral-survey>

